








RESEARCH ARTICLE

Survival and prognostic factors of early-stage non-small cell lung cancer in Central and Eastern Europe: A prospective cohort study

Mahdi Sheikh¹  | Shama Virani¹  | Hilary A. Robbins¹  | Lenka Foretova²  |
Ivana Holcatova^{3,4} | Vladimir Janout⁵ | Jolanta Lissowska⁶  | Marie Navratilova² |
Anush Mukeriya⁷ | Miodrag Ognjanovic⁸ | Beata Swiatkowska⁹ | David Zaridze⁷  |
Paul Brennan¹ 

¹Genomic Epidemiology Branch, International Agency for Research on Cancer (IARC/WHO), Lyon, France

²Department of Cancer Epidemiology & Genetics, Masaryk Memorial Cancer Institute, Brno, Czech Republic

³Department of Public Health and Preventive Medicine, Second Faculty of Medicine, Charles University, Prague, Czech Republic

⁴Department of Oncology, 2nd Medical Faculty & University Hospital Motol, Prague, Czech Republic

⁵Faculty of Medicine, Palacky University, Olomouc, Czech Republic

⁶Department of Cancer Epidemiology and Prevention, M. Sklodowska-Curie National Research Institute of Oncology, Warsaw, Poland

⁷Department of Clinical Epidemiology, N.N. Blokhin National Medical Research Centre of Oncology, Moscow, Russia

⁸International Organization for Cancer Prevention and Research, Belgrade, Serbia

⁹Department of Environmental Epidemiology, Nofer Institute of Occupational Medicine, Poland

Correspondence

Mahdi Sheikh, Genomic Epidemiology Branch, International Agency for Research on Cancer (IARC/WHO),

Abstract

Background: Although early diagnosis and surgical resection of the tumor have been shown to be the most important predictors of lung cancer survival, long-term survival for surgically-resected early-stage lung cancer remains poor.

Aims: In this prospective study we aimed to investigate the survival and prognostic factors of surgically-resected early-stage non-small cell lung cancer (NSCLC) in Central and Eastern Europe.

Methods: We recruited 2052 patients with stage I-IIIa NSCLC from 9 centers in Russia, Poland, Serbia, Czech Republic, and Romania, between 2007–2016 and followed them annually through 2020.

Results: During follow-up, there were 1121 deaths (including 730 cancer-specific deaths). Median survival time was 4.9 years, and the 5-year overall survival was 49.5%. In the multivariable model, mortality was increased among older individuals (HR for each 10-year increase: 1.31 [95% CI: 1.21–1.42]), males (HR:1.24 [1.04–1.49]), participants with significant weight loss (HR:1.25 [1.03–1.52]), current smokers (HR:1.30 [1.04–1.62]), alcohol drinkers (HR:1.22 [1.03–1.44]), and those with higher stage tumors (HR stage IIIa vs. I: 5.54 [4.10 – 7.48]). However, education, chronic obstructive pulmonary diseases (COPD), and tumor histology were not associated with risk of death. All baseline indicators of smoking and alcohol drinking showed a dose-dependent association with the risk of cancer-specific mortality. This included pack-years of cigarettes smoked (p -trend = 0.04), quantity of smoking (p -trend = 0.008), years of smoking (p -trend = 0.010), gram-days of alcohol drank (p -trend = 0.002), frequency of drinking (p -trend = 0.006), and years of drinking (p -trend = 0.016).

Conclusion: This study shows that the 5-year survival rate of surgically-resected stage I-IIIa NSCLC is still around 50% in Central and Eastern Europe. In addition

This is an open access article under the terms of the [Creative Commons Attribution](https://creativecommons.org/licenses/by/4.0/) License, which permits use, distribution and reproduction in any medium, provided the original work is properly cited.

© 2023 The Authors. *Cancer Medicine* published by John Wiley & Sons Ltd.

150 cours Albert Thomas, Lyon 69372,
CEDEX 08, France.

Email: sheikhm@iarc.who.int

Funding information

Centre International de Recherche sur
le Cancer

to non-modifiable prognostic factors, lifetime patterns of smoking and alcohol drinking affected the risk of death and disease progression in a dose-dependent manner in this population.

KEYWORDS

alcohol, death, mortality, neoplasm, smoking, tobacco

1 | INTRODUCTION

In 2020, an estimated 2.2 million people globally were diagnosed with lung cancer, and 1.79 million died of this disease, making it the leading cause of cancer death worldwide.¹ Non-small cell lung cancer (NSCLC) accounts for 85% of all lung cancer cases with cigarette smoking being the major risk factor.² Following the successful implementation of tobacco control policies over the past decades, the incidence of lung cancer has been declining.³ However, lung cancer survival has only slightly improved and 5-year survival remains below 25%.⁴⁻⁷

Although early diagnosis and surgical resection of the tumor have been shown to be the most important predictors of lung cancer survival,^{2,8-10} 5-year survival for surgically resected early-stage (I-IIIa) lung cancer remains poor.¹¹⁻¹⁴ There is limited information on prognostic factors among early-stage surgically resected lung cancers.^{15,16} Most available evidence regarding lung cancer survival originates from retrospective studies that are prone to selection and reporting bias,^{14,16} or from registry data linkage studies that are prone to confounding and do not allow an accurate evaluation of the prognostic factors.¹⁷ Strong epidemiological data could help identify modifiable exposures with prognostic value and guide efforts to decrease the global burden of lung cancer.

We performed a large prospective study across 9 referral centers in 5 countries in eastern and central Europe to investigate the survival features and prognostic factors of early-stage surgically resected NSCLC.

2 | METHODS

2.1 | Study population and design

This prospective study included patients from 9 medical centers across 5 countries in eastern and central Europe, with newly diagnosed surgically resected early-stage (I, II, or IIIa) NSCLC, coded as C34 (site code) and as primary invasive (morphology code 3) according to the 3rd edition of the International Classification for Diseases in Oncology (ICD-O-3).¹⁸ From April 2007 to July 2016, participants were enrolled in Russia (departments of thoracic surgery

in N.N. Blokhin National Medical Research Center of Oncology, and the City Clinical Oncological Hospital No.1 in Moscow). From October 2011 to June 2014, additional participants were enrolled in Czech Republic (Motol University Hospital in Prague, Masaryk Memorial Cancer Institute in Brno and University Hospital Olomouc in Olomouc), Romania (Marius Nasta Institute of Pneumology in Bucharest), Serbia (Clinical Centre of Serbia in Belgrade), and Poland (Institute of Tuberculosis and Lung Diseases in Warsaw, and Military Medical Academy in Lodz).

Participants were recruited after receiving a histological diagnosis of NSCLC but before receiving any local or systemic treatment. Upon enrolment, informed written consent was obtained from all participants. This study was approved by the local ethical committees of each study center and also the ethical committee of the International Agency for Research on Cancer.

2.2 | Questionnaires and enrollment data

Upon enrolment all participants underwent an interview using a structured questionnaire to gather information on demographics, family and medical histories, and exposures and lifestyle habits. Participants were asked if they had been diagnosed with chronic health conditions including diabetes mellitus and hypertension, as well as any chronic obstructive pulmonary disorders (COPD) including chronic bronchitis and emphysema. Participants were also asked about their current weight and height, and their weight 2 years before diagnosis. We observed significant correlations between pre-diagnostic weight loss and body mass index (BMI) at diagnosis (Table S1). Based on recent evidence,^{19,20} we used the 2-year pre-diagnostic weight change for this analysis, rather than using BMI at enrolment. For each participant, we categorized weight change as “no weight loss”, “<5% weight loss”, or “≥5% weight loss”.

The questionnaire included questions about lifetime history of cigarette smoking, the starting and stopping ages to smoke cigarettes, as well as the frequency and amount of smoking cigarettes. Cigarette smokers were defined as participants who reported to have smoked at

least 100 cigarettes through their lifetime and were categorized as “current smokers” or “former smokers.” Former smokers were defined as cigarette smokers who reported to have quit smoking at least 1 year before diagnosis. We calculated the cumulative cigarettes smoked in pack-years (a pack includes 20 cigarettes) by multiplying the number of cigarette packs smoked per day by the number of years the participant had smoked.

The participants were asked about their lifetime history of drinking different types of alcoholic beverages. For each type of alcoholic beverage, the participants were further asked about the starting and stopping ages, as well as the frequency and amount of drinking the specified alcoholic beverage. Regular alcohol drinkers were defined as participants who reported to have drunk alcoholic beverages at least once per week for 1 year, who were further categorized as “current drinkers” and “former drinkers.” Former drinkers were defined as regular alcohol drinkers who reported to have quit drinking at least 1 year before diagnosis. We calculated the average daily consumption of alcoholic beverages using the reported frequency and amount of each alcoholic beverage. Then, we converted the average daily consumption of alcoholic beverages into milliliters of ethanol based on the ethanol content of alcoholic beverages in eastern and central European countries (Table S2) and multiplied this number by 0.816 to calculate the average daily consumption of ethanol by grams (for ethanol 1 milliliter = 0.816 grams). Finally, we calculated the cumulative amount of consumed pure alcohol in gram-days by multiplying the grams of average daily consumption of ethanol by the number of years the participant had drunk alcohol regularly.

The relevant medical, imaging, and pathology documents were reviewed by an expert local team to complete a separate questionnaire that included necessary information on the histopathological features of the tumor. The completed questionnaires and data underwent a quality control and quality assurance process by a central team. We categorized the participants based on their tumor histology as having “squamous cell carcinoma,” “adenocarcinoma,” and “neuroendocrine tumors.” The classification of tumor stage was performed upon diagnosis and before receiving any treatment for the current tumor, based on the 7th edition of the TNM classification system that is proposed by the American Joint Commission on Cancer (AJCC).²¹ For participants who were diagnosed before 2010, we converted tumor stage from the AJCC 6th edition TNM staging system to the AJCC 7th edition (Tables S3 and S4).

2.3 | Follow-up process

Patients were followed twice per year. Active and passive follow-up processes were used to determine vital

status, tumor progression (recurrence and metastasis), treatments, and causes of death. Active follow-up was performed by contacting the patients, their families, their responsible physicians when applicable, and medical record review. Passive follow-up was performed by linkage to the national cancer and death registries in each country. The primary and secondary causes of death were recorded based on the 10th Revision of the International Statistical Classification of Diseases and Related Health Problems.²²

2.4 | Statistical analysis

We used the Kaplan–Meier method and log-rank tests to calculate and compare unadjusted survival probabilities. We used Cox proportional hazards regression models to estimate the probabilities of overall survival and progression-free survival and identify their determinants. To assess the probability of lung-cancer specific survival and its determinants, we used Fine-Gray competing-risks regression models, accounting for death from other causes as the competing event.

In all models the entry time was defined as the date at which the participant was diagnosed with NSCLC, and the exit time was defined as the end date of follow-up time. For assessing the probability of overall survival and hazards of all-cause mortality, date of death from any cause was set as the end of follow-up time, while date of the last contact was set as the censoring date for patients who were alive at the last contact (through June 7, 2020). For assessing the probability of progression-free survival, date of death from any cause or date of tumor progression, whichever occurred first was set as the end of follow-up time, while date of the last contact was set as the censoring date for patients who were alive and did not have any documented tumor progression at the last contact. For assessing the probability of lung cancer-specific mortality and its hazards, date of death from lung cancer was set as the end of follow-up time for the event of interest, date of death from any other cause was set as the end of follow-up time for the competing event, and date of the last contact was set as the censoring date for patients who were alive at the last contact.

The multivariable models were adjusted for study location, age at diagnosis, sex, education, amount of weight loss in the 2 years before diagnosis, history of COPD, history of chronic general health conditions, smoking status at diagnosis, regular-alcohol drinking status at diagnosis, tumor histology, and tumor stage at diagnosis. All models were also stratified by year of diagnosis, chemotherapy, and radiotherapy after diagnosis. The proportional hazards assumption was tested using Schoenfeld’s global

test, which was met for all variables in the multivariable models, except for tumor stage which showed time-varying effects and was therefore treated as a time-varying covariate.²³

We also evaluated the effects of different baseline indicators of cigarette smoking/drinking alcohol on NSCLC survival by replacing the smoking/drinking variables in the main models with variables that indicate cumulative cigarettes smoked/alcohol drank, intensity of smoking/drinking, and duration of smoking/drinking.

We also assessed the dose–response associations of different smoking and alcohol drinking indicators with risk of the study outcomes by assigning consecutive integers to the categories of each exposure indicator and calculating the *p* value for trend by treating these variables as continuous variables in the adjusted models.

All statistical analyses were two-sided and performed using Stata statistical software version 14 (Stata Corporation).

3 | RESULTS

3.1 | Descriptive statistics

Of the initial 2291 patients recruited into this study, 239 were excluded because of having incomplete data for variables used for downstream analysis, leaving 2052 patients eligible for analysis. Most patients were recruited in Russia (55%), a quarter were recruited in Poland (25%), and the remainder were recruited in Serbia, Czech Republic, and Romania (20%). The mean age at diagnosis was 63.5 years (SD 8.7 years), and most participants were male (71%). At the time of diagnosis, 41% had a diagnosis of hypertension and/or type 2 diabetes and 21% had COPD. Significant weight loss (5% or greater) in the 2 years prior to diagnosis was reported in 19% of participants; 54% of participants were current smokers, 32% were current alcohol drinkers, and presented with squamous cell carcinoma (46%) or adenocarcinoma (44%). Approximately half of the patients presented at stage I (51%) (Table 1).

3.2 | Survival characteristics

The median survival time for all patients was 4.9 years, with variation across demographic and clinical characteristics. Better overall survival was observed in females ($p < 0.001$), those who did not smoke ($p < 0.001$), did not drink alcohol ($p < 0.001$), did not lose weight in the last 2 years ($p < 0.001$), were diagnosed with adenocarcinoma ($p = 0.006$), and diagnosed at the earliest stages ($p < 0.001$) (Table 1).

Three- and 5-year overall survival rates were 63% and 49%, while 3- and 5-year progression-free survival rates were 54% and 43%, respectively.

3.3 | Clinical and demographic predictors of survival

In the multivariable regression model that was adjusted for potential confounders and risk factors, the hazard of all-cause mortality was increased among older individuals (HR for each 10-year increase in age: 1.31 [95% CI: 1.21–1.42]), males (HR: 1.24 [1.04–1.49]), those who exhibited weight loss $\geq 5\%$ (HR: 1.25 [1.03–1.52]), current smokers (HR: 1.30 [1.04–1.62]), and regular alcohol drinkers (former drinkers HR: 1.26 [1.05–1.54]; current drinkers HR: 1.22 [1.03–1.44]) (Table 2). Tumor stage was strongly associated with increased hazards of death in a dose-dependent manner as stage increased, reaching a more than fivefold increase in the hazards of death among individuals diagnosed at stage IIIA (HR: 5.54 [4.10–7.48]) (Table 2, Figure 1).

The multivariable competing risk regression model showed that the hazard of cancer-specific mortality was higher among older individuals (HR for each 10-year increase in age: 1.11 [1.01–1.22]), current smokers (HR: 1.11 [1.03–1.72]), current drinkers (HR: 1.25 [1.03–1.52]), and those with higher stage tumors (HR for stage IIIA: 5.31 [3.68–7.65]) (Table 2).

From the multivariable disease progression model, the hazard of disease progression was increased among older individuals (HR for each 10-year increase in age: 1.25 [1.16–1.35]), regular alcohol drinkers (former drinkers HR: 1.26 [1.05–1.52]; current drinkers HR: 1.18 [1.01–1.38]), and neuroendocrine tumors (HR: 1.22 [0.99–1.49]). In contrast, having a chronic illness was associated with a lower hazard of disease progression (HR: 0.87 [0.77–0.99]). There was increasing hazards of progression with increasing tumor stage, reaching almost a fourfold increase in the hazards of disease progression among individuals diagnosed at stage IIIA (HR: 3.85 [2.94–5.03]) (Table 2).

3.4 | Smoking and alcohol drinking characteristics associated with outcomes

Specific measures of smoking and drinking behaviors were assessed in lieu of smoking or drinking status, respectively, in the adjusted models. Upon adjustment for drinking status and other variables, cumulative amount of cigarettes smoked (HR_{>40 pack/years} = 1.26 [1.00–1.59]), quantity of smoking (HR_{>1 pack/day} = 1.31 [1.03–1.68]), and smoking duration (HR_{>50 years} = 1.41 [1.07–1.85])

TABLE 1 Estimates of crude survival rates of European patients with surgically resected early-stage non-small cell lung cancer by demographical and clinical characteristics.

| Characteristics | N (%) | Median survival time (years) | p-value ^a | 3-year survival (%) | 5-year survival (%) |
|---------------------------------------|------------|------------------------------|----------------------|---------------------|---------------------|
| Total | | | | | |
| | 2052 (100) | 4.9 | | 62.9 | 49.5 |
| Country ^b | | | 0.67 | | |
| Russia | 1122 (55) | 5.1 | | 62.5 | 49.8 |
| Poland | 508 (25) | 4.6 | | 62.5 | 47.3 |
| Serbia | 265 (13) | 4.4 | | 65.2 | 47.0 |
| Czech Republic | 84 (4) | — | | 66.9 | — |
| Romania | 73 (3) | — | | 59.7 | — |
| Sex | | | <0.001 | | |
| Male | 1461 (71) | 4.1 | | 58.9 | 44.9 |
| Female | 591 (29) | 6.8 | | 72.7 | 60.0 |
| Education | | | 0.053 | | |
| Primary school | 686 (33) | 4.2 | | 59.2 | 45.7 |
| High school | 831 (41) | 5.2 | | 64.3 | 51.7 |
| University | 535 (26) | 5.0 | | 65.2 | 50.4 |
| Weight loss (in the past 2 years) | | | <0.001 | | |
| No weight loss | 431 (21) | 5.8 | | 67.0 | 53.8 |
| Lost <5% of weight | 1221 (60) | 4.9 | | 63.2 | 49.5 |
| Lost ≥5% of weight | 400 (19) | 3.6 | | 56.9 | 43.8 |
| Smoking status at diagnosis | | | <0.001 | | |
| Never smoker | 360 (18) | 6.8 | | 74.5 | 61.3 |
| Former smoker | 587 (28) | 4.5 | | 58.8 | 47.6 |
| Current smoker | 1105 (54) | 4.3 | | 61.2 | 46.3 |
| Regular alcohol drinking at diagnosis | | | <0.001 | | |
| Never drinker | 1070 (52) | 5.7 | | 67.2 | 53.9 |
| Former drinker | 324 (16) | 4.0 | | 56.1 | 43.6 |
| Current drinker | 658 (32) | 4.1 | | 59.0 | 44.8 |
| Tumor histology | | | 0.006 | | |
| Squamous cell carcinoma | 952 (46) | 4.4 | | 60.3 | 46.6 |
| Adenocarcinoma | 891 (44) | 5.4 | | 66.7 | 52.9 |
| Neuroendocrine tumors | 209 (10) | 4.5 | | 58.0 | 46.2 |
| Tumor stage | | | <0.001 | | |
| I-A | 504 (25) | 8.4 | | 78.9 | 63.0 |
| I-B | 530 (26) | 6.3 | | 69.8 | 57.2 |
| II-A | 334 (16) | 4.9 | | 61.9 | 49.2 |
| II-B | 234 (11) | 3.6 | | 55.9 | 40.3 |
| III-A | 450 (22) | 2.0 | | 40.7 | 28.7 |

Note: Bold values indicate statistical significance at the $p < 0.05$ level.

^aLog-rank test p value.

^bMaximum follow-up time for participants from Czech Republic and was 4.1 years and at the latest follow-up more than 50% of patients were alive. Therefore median survival time and 5-year survival rates could not be estimated for participants that were recruited from these countries.

TABLE 2 Association between different demographical and clinical factors with risk of different outcomes in European patients with surgically resected early stage non-small cell lung cancer.

| Characteristic | N (%) | Overall mortality | Cancer-specific mortality | Disease progression ^c |
|--|------------|-----------------------------------|-------------------------------------|-----------------------------------|
| | | Adjusted HR (95% CI) ^a | Adjusted HR (95% CI) ^{a,b} | Adjusted HR (95% CI) ^a |
| Study location | | | | |
| Russia | 1,122 (55) | 1 | 1 | 1 |
| Poland | 508 (25) | 1.12 (0.88–1.43) | 0.46 (0.31–0.68) | 1.04 (0.83–1.31) |
| Serbia | 265 (13) | 0.96 (0.72–1.27) | 0.72 (0.48–1.07) | 1.05 (0.81–1.36) |
| Czech Republic | 84 (4) | 0.92 (0.55–1.54) | 0.67 (0.37–1.24) | 0.98 (0.62–1.55) |
| Romania | 73 (3) | 0.92 (0.60–1.42) | 0.76 (0.36–1.56) | 0.98 (0.67–1.45) |
| Age at diagnosis (years) | | | | |
| Each 10-year increase in age | — | 1.31 (1.21–1.42) | 1.11 (1.01–1.22) | 1.25 (1.16–1.35) |
| Sex | | | | |
| Female | 591 (29) | 1 | 1 | 1 |
| Male | 1461 (71) | 1.24 (1.04–1.49) | 1.10 (0.88–1.37) | 1.15 (0.97–1.36) |
| Education level | | | | |
| Primary school | 686 (33) | 1 | 1 | 1 |
| High school | 831 (41) | 0.93 (0.80–1.08) | 0.90 (0.75–1.09) | 0.94 (0.81–1.08) |
| University | 535 (26) | 0.89 (0.76–1.05) | 0.96 (0.79–1.17) | 0.91 (0.78–1.07) |
| Chronic obstructive pulmonary disorders ^d | | | | |
| No | 1629 (79) | 1 | 1 | 1 |
| Yes | 423 (21) | 0.99 (0.84–1.15) | 0.89 (0.74–1.07) | 0.97 (0.84–1.13) |
| Chronic diseases ^e | | | | |
| No | 1213 (59) | 1 | 1 | 1 |
| Yes | 839 (41) | 0.88 (0.77–1.02) | 0.96 (0.81–1.13) | 0.87 (0.77–0.99) |
| Weight loss (in the past 2 years) | | | | |
| No weight loss | 431 (21) | 1 | 1 | 1 |
| Lost <5% of weight | 1221 (60) | 1.01 (0.86–1.19) | 1.05 (0.86–1.27) | 0.97 (0.83–1.13) |
| Lost ≥5% of weight | 400 (19) | 1.25 (1.03–1.52) | 1.16 (0.91–1.46) | 1.14 (0.95–1.37) |
| Smoking | | | | |
| Never | 360 (18) | 1 | 1 | 1 |
| Former | 587 (28) | 1.13 (0.89–1.43) | 1.14 (0.86–1.52) | 1.04 (0.84–1.30) |
| Current | 1105 (54) | 1.30 (1.04–1.62) | 1.33 (1.03–1.72) | 1.16 (0.94–1.43) |
| Regular alcohol drinking | | | | |
| Never | 1070 (52) | 1 | 1 | 1 |
| Former | 324 (16) | 1.26 (1.05–1.53) | 1.19 (0.94–1.52) | 1.26 (1.05–1.52) |
| Current | 658 (32) | 1.22 (1.03–1.44) | 1.25 (1.03–1.52) | 1.18 (1.01–1.38) |
| Tumor histology | | | | |
| Squamous cell carcinoma | 952 (46) | 1 | 1 | 1 |
| Adenocarcinoma | 891 (44) | 1.05 (0.92–1.21) | 1.05 (0.88–1.25) | 1.11 (0.97–1.27) |
| Neuroendocrine tumors | 209 (10) | 1.18 (0.95–1.46) | 1.16 (0.87–1.53) | 1.22 (0.99–1.49) |
| Tumor stage ^f | | | | |
| IA | 504 (25) | 1 | 1 | 1 |
| IB | 530 (26) | 1.40 (1.05–1.88) | 1.72 (1.21–2.52) | 1.30 (1.00–1.69) |

TABLE 2 (Continued)

| Characteristic | N (%) | Overall mortality | Cancer-specific mortality | Disease progression ^c |
|----------------|----------|-----------------------------------|-------------------------------------|-----------------------------------|
| | | Adjusted HR (95% CI) ^a | Adjusted HR (95% CI) ^{a,b} | Adjusted HR (95% CI) ^a |
| IIA | 334 (16) | 2.05 (1.47–2.86) | 2.32 (1.56–3.46) | 1.78 (1.32–2.40) |
| IIB | 234 (11) | 3.10 (2.18–4.41) | 3.31 (2.16–5.07) | 2.18 (1.59–2.98) |
| IIIA | 450 (22) | 5.54 (4.10–7.48) | 5.31 (3.68–7.65) | 3.85 (2.94–5.03) |

Note: Bold values indicate statistical significance at the $p < 0.05$ level.

Abbreviations: CI, confidence interval; HR, hazards ratio.

^aThe adjusted models simultaneously include all variables as shown in the table and are stratified by year of enrolment and treatments received post-surgery (chemotherapy, radiotherapy).

^bFor this analysis death from any cause other than lung cancer was set as a competing event.

^cdisease progression is defined as local recurrence, metastasis, or death.

^dChronic obstructive pulmonary diseases include chronic bronchitis and emphysema.

^eChronic diseases include hypertension and type 2 diabetes mellitus.

^fThe hazards of the outcomes for higher-stage tumors did not remain consistent over time and decreased annually by 18% (IIB) and 26% (IIIA) for overall mortality, by 13% (IIA) and 18% (IIB) and 22% (IIIA) for cancer-specific mortality; and by 9% (IIB) and 21% (IIIA) for disease progression.

were associated with increased hazards of overall death (Table 3, Figure 1). These associations were in a dose-dependent manner for quantity of cigarettes smoked ($p_{\text{trend}} = 0.039$) and smoking duration ($p_{\text{trend}} = 0.044$). Similarly, the hazard of cancer-specific mortality showed a dose-dependent increase with increasing amounts of cumulative cigarettes smoked ($p_{\text{trend}} = 0.040$), quantity of smoking ($p_{\text{trend}} = 0.008$), and smoking duration ($p_{\text{trend}} = 0.010$) (Table 3). An increased hazard of disease progression was observed for patients who smoked for more than 50 years compared to non-users (HR = 1.28 [1.00–1.66]), although the hazards increased with longer smoking durations ($p_{\text{trend}} = 0.050$) (Table 3).

On adjustment for smoking status and other variables, cumulative amount of alcohol drank ($p_{\text{trend}} \leq 0.003$ for all outcomes), drinking frequency ($p_{\text{trend}} \leq 0.006$ for all outcomes), and years of drinking ($p_{\text{trend}} \leq 0.026$ for all outcomes) were associated with increased hazard of overall mortality, cancer-specific mortality, and disease progression, respectively, in a dose-dependent manner (Table 3, Figure 1).

4 | DISCUSSION

This international multicentric prospective study showed that the 5-year survival rate for stage I–IIIA NSCLC is still poor in Central and Eastern Europe at 49.5%. Almost 60% of patients experience disease progression within 5 years of their diagnosis. In this population, baseline demographics and clinical features including older age, male gender, pre-diagnostic weight loss, smoking, and alcohol intake were associated with a higher risk of mortality and disease progression after adjustment for lung cancer

stage. Importantly, lifetime patterns of smoking and alcohol intake affected the survival of these patients in a dose-dependent manner.

Our study shows that the 5-year survival of patients with early stage (I–IIIA) NSCLC remains below 50% in Central and Eastern Europe. Poor survival is a shared feature of lung cancer across Europe, as shown in an analysis of the EURO CARE project that included data from 87 European cancer registries in 28 countries.⁵ In the EURO CARE project, the average 5-year survival for lung cancer (stages I–IV) across Europe was estimated around 13%, between 1999 and 2007.⁵ Although our analysis only included surgically resected early-stage NSCLC cases, stage at diagnosis consistently remained the most important predictor of NSCLC survival in all patient subgroups. The 5-year survival rate ranged from 63% among patients with stage IA tumors to 28.7% in patients with stage IIIA tumors. This is consistent with findings from large-scale retrospective studies in different parts of Europe (e.g., 5-year survival rate for stage I lung cancer = 66.1%–72.4% in Switzerland and 56.6 in the United Kingdom; and for stage III: 16.5%–23.1% in Switzerland and 12.6% in the United Kingdom).^{4,24,25} Given the fact that a large proportion of lung cancer cases are still diagnosed at advanced stages,^{24–26} international efforts are needed to facilitate earlier diagnosis, including by screening of high-risk populations.^{10,26–28}

In our study, patients with NSCLC who were older, male, and current smokers had lower survival. The duration and intensity of smoking increased the hazards of all-cause and cancer-specific death, in a dose-dependent manner. The prognostic value of age and sex for lung cancer survival has been previously demonstrated.^{29–31} However, current literature shows conflicting results

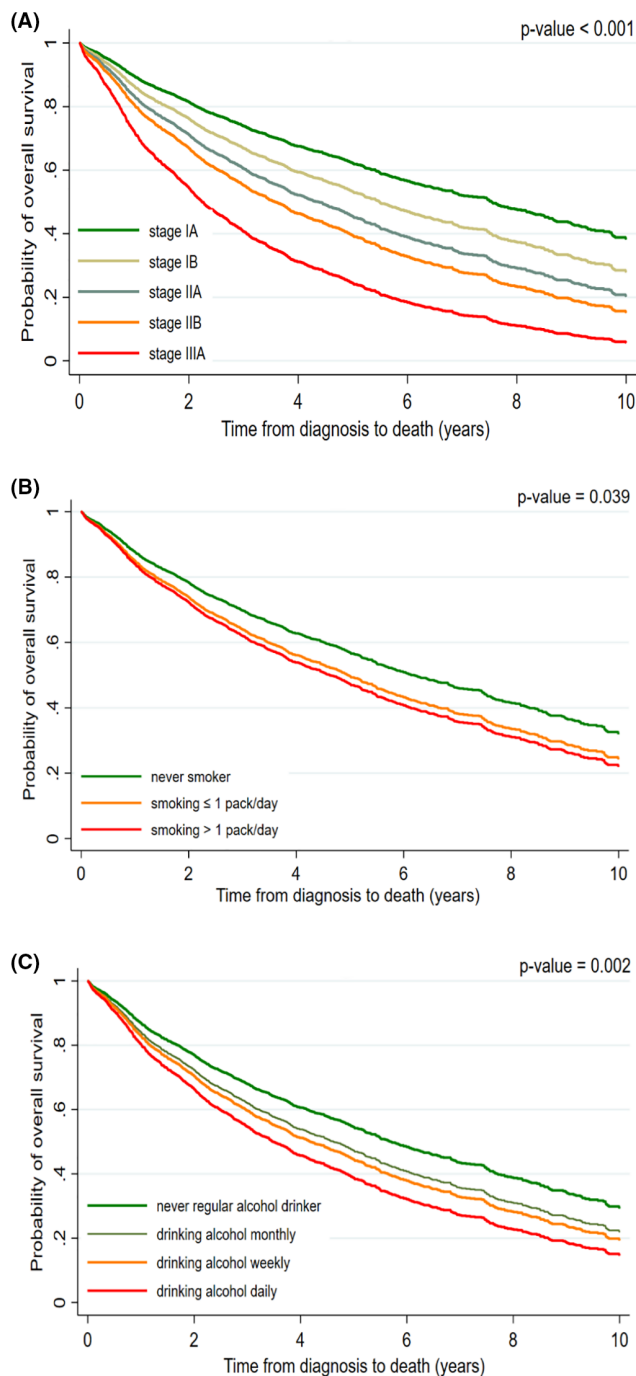


FIGURE 1 Adjusted overall survival estimates among European patients with surgically resected early stage (IA–IIIA) non-small cell lung cancer by (A) stage at diagnosis, (B) smoking intensity at diagnosis, and (C) frequency of alcohol drinking at diagnosis. The figures are derived from proportional hazards regression models that included age, sex, study location, marital status, education, history of chronic respiratory disorders, history of chronic diseases, amount of weight loss, tumor histology, tumor stage, smoking, alcohol drinking, and received treatments (chemotherapy, radiotherapy).

for smoking status at the time of diagnosis. While many studies have shown prognostic effects for smoking status at diagnosis,^{32–35} some studies did not find any effect for

smoking status at the time of diagnosis on the survival of these patients.^{36–38} These conflicting findings might be partly due to the changes in postdiagnosis smoking behavior among current smokers that has not been accounted for in different studies.³⁹ We recently showed that quitting smoking after the diagnosis of lung cancer could reduce the risk of death by 30% among current smokers.³⁹ A recent review by Gemine and Lewis has identified different mechanisms that could underlie the negative effects of smoking continuation on lung cancer survival that include the effect of tobacco smoke and its carcinogenic compounds on the promotion of tumor growth, cellular damage, genetic mutations, immunosuppression, increasing resistance to and complications from the available treatments, and enhancing tumor recurrence and other comorbidities that can potentially increase the risk of mortality in lung cancer patients.¹⁶

There is also conflicting evidence on the relationship between alcohol consumption and lung cancer survival, ranging from studies that showed beneficial effects for consuming low amounts of alcohol⁴⁰ to studies that showed negative effects of alcohol consumption for only short-term outcomes including postsurgical complications,^{41,42} but not long-term outcomes,⁴³ and those that showed the negative effects on long-term outcomes.⁴⁴ In the current study, all indicators of alcohol consumption, including the duration of lifetime consumption, frequency of consumption, and cumulative amount of consumed alcohol, were associated with a dose-dependent increase in risk of all-cause and cancer-specific mortality, and disease progression compared to never consumption of alcohol. There is growing evidence of complex interactions between alcohol use/abuse, and the antitumor immune response, tumor growth, and metastasis.⁴⁵ However, more prospective and mechanistic research is needed to investigate the complex relationship between alcohol and cancer survival.⁴⁵

Many studies have previously shown the inverse relationship between BMI at diagnosis and lung cancer survival.^{46,47} Our results that show the significant inverse correlation between pre-diagnostic weight loss with BMI and tumor stage at diagnosis. We also show the prognostic effects of pre-diagnostic weight loss on NSCLC survival and disease progression, which supports the growing evidence that pre and post diagnosis weight changes might be more reliable prognostic factors for lung cancer survival than weight or BMI at the time of diagnosis.^{19,48} The observed effect of BMI at diagnosis might partly be a consequence of the preexisting illness resulting in weight loss and distorting the true relationship between BMI and the risk of death and therefore clinicians should be alerted against misinterpreting the current evidence that obesity might be “good” or “protective” for cancer patients.^{19,20,49}

TABLE 3 Association between smoking and alcohol drinking characteristics and risk of different outcomes in European patients with surgically resected early stage non-small cell lung cancer.

| Characteristic | N (%) | Overall mortality | Cancer-specific mortality | Disease progression ^c |
|---|-----------|-----------------------------------|-------------------------------------|-----------------------------------|
| | | Adjusted ^a HR (95% CI) | Adjusted ^{a,b} HR (95% CI) | Adjusted ^a HR (95% CI) |
| Cumulative amount of cigarettes smoked | | | | |
| None | 360 (18) | 1 | 1 | 1 |
| ≤40 pack/years | 759 (37) | 1.22 (0.97–1.52) | 1.17 (0.91–1.51) | 1.09 (0.88–1.34) |
| >40 pack/years | 924 (45) | 1.26 (1.00–1.59) | 1.31 (1.01–1.71) | 1.15 (0.93–1.43) |
| <i>P</i> _{trend} | | 0.099 | 0.040 | 0.18 |
| Quantity of cigarettes smoked | | | | |
| None | 360 (18) | 1 | 1 | 1 |
| ≤1 pack/day | 1080 (53) | 1.22 (0.98–1.51) | 1.18 (0.92–1.51) | 1.11 (0.91–1.36) |
| >1 pack/day | 603 (29) | 1.31 (1.03–1.68) | 1.41 (1.07–1.87) | 1.13 (0.90–1.42) |
| <i>P</i> _{trend} | | 0.039 | 0.008 | 0.35 |
| Smoking duration | | | | |
| None | 360 (18) | 1 | 1 | 1 |
| ≤40 years | 825 (40) | 1.21 (0.96–1.52) | 1.16 (0.89–1.49) | 1.06 (0.86–1.31) |
| >40–50 years | 634 (31) | 1.19 (0.94–1.51) | 1.23 (0.94–1.62) | 1.13 (0.90–1.40) |
| >50 years | 226 (11) | 1.41 (1.07–1.85) | 1.58 (1.14–2.19) | 1.28 (1.00–1.66) |
| <i>P</i> _{trend} | | 0.044 | 0.010 | 0.050 |
| Cumulative amount of alcohol drank | | | | |
| None | 1070 (52) | 1 | 1 | 1 |
| ≤20 grams/day | 574 (28) | 1.17 (1.00–1.38) | 1.16 (0.96–1.42) | 1.16 (0.99–1.36) |
| >20 grams/day | 397 (20) | 1.37 (1.13–1.65) | 1.43 (1.14–1.78) | 1.31 (1.09–1.57) |
| <i>P</i> _{trend} | | 0.001 | 0.002 | 0.003 |
| Alcohol frequency | | | | |
| None | 1070 (52) | 1 | 1 | 1 |
| Less than once a month | 554 (27) | 1.18 (0.99–1.40) | 1.21 (0.99–1.48) | 1.15 (0.97–1.35) |
| Several days a week | 343 (17) | 1.28 (1.05–1.56) | 1.22 (0.97–1.52) | 1.25 (1.04–1.52) |
| Daily | 85 (4) | 1.48 (1.06–2.06) | 1.76 (1.19–2.59) | 1.50 (1.11–2.03) |
| <i>P</i> _{trend} | | 0.002 | 0.006 | 0.002 |
| Alcohol drinking duration | | | | |
| None | 1070 (52) | 1 | 1 | 1 |
| ≤40 years | 561 (28) | 1.22 (1.03–1.45) | 1.22 (1.00–1.49) | 1.21 (1.03–1.43) |
| >40 years | 410 (20) | 1.26 (1.04–1.52) | 1.29 (1.03–1.62) | 1.20 (1.00–1.44) |
| <i>P</i> _{trend} | | 0.009 | 0.016 | 0.026 |

Note: Data were missing on smoking duration for 7 ever smokers; on quantity of smoked cigarettes for 9 ever smokers; and on duration of alcohol drinking for 11 ever alcohol drinkers. Bold values indicate statistical significance at the $p < 0.05$ level.

Abbreviations: CI, confidence interval; HR, hazards ratio.

^aThe models included age, sex, study location, marital status, education, history of chronic respiratory disorders, history of chronic diseases, amount of weight loss, tumor histology, tumor stage, the smoking status (for analyses including alcohol variables indicated), and alcohol drinking status (for analyses including smoking variables indicated). All models are stratified by year of enrolment and treatments received post-surgery (chemotherapy, radiotherapy).

^bFor this analysis death from any cause other than lung cancer was set as a competing event.

^cDisease progression is defined as local recurrence, metastasis, or death.

The strengths of our study are its multicentric prospective design, large sample size, high data quality, and long-term follow-up which allowed assessment of multiple outcomes among early-stage surgically resected lung cancer patients across several countries. One limitation is that the exposures were based on self-reported data. However, due to the prospective nature of this study, any measurement errors in exposures are likely to be non-differential by the studied outcomes. Due to the observational nature of the study, we did not intervene in patients' management process and ascertained the cause of death and disease progression using the available death certificates and patients' medical records. Consequently, some misclassifications in the cancer-specific mortality and disease progression are inevitable due to the variation in physicians' therapeutic and diagnostic approaches and patient's adherence to the follow-up visits. However, death status is not likely to be affected by these measurements error.

In conclusion, this study shows that the survival of early-stage surgically resected NSCLC is still poor in Central and Eastern Europe. In addition to non-modifiable prognostic factors (e.g., age, gender, tumor stage), lifetime patterns of smoking and alcohol drinking affected the risk of death and disease progression in a dose-dependent manner. Therefore, to decrease the burden of lung cancer, implementation of early detection and treatment strategies should be accompanied by supporting behavioral changes.

AUTHOR CONTRIBUTIONS

Mahdi Sheikh: Conceptualization (lead); formal analysis (lead); investigation (lead); methodology (lead); project administration (equal); supervision (lead); visualization (lead); writing – original draft (lead); writing – review and editing (lead). **Shama Virani:** Formal analysis (equal); investigation (equal); methodology (equal); visualization (equal); writing – original draft (equal); writing – review and editing (equal). **Hilary A Robbins:** Methodology (equal); visualization (equal); writing – review and editing (equal). **Lenka Foretova:** Project administration (equal); resources (equal); writing – review and editing (equal). **Ivana Holcatova:** Project administration (equal); resources (equal); writing – review and editing (equal). **Vladimir Janout:** Project administration (equal); resources (equal); writing – review and editing (equal). **Jolanta Lissowska:** Project administration (equal); resources (equal); writing – review and editing (equal). **Marie Navratilova:** Project administration (equal); resources (equal); writing – review and editing (equal). **Anush Mukeriyia:** Project administration (equal); resources (equal); writing – review and editing (equal). **Miodrag Ognjanovic:** Project administration (equal); resources (equal); writing – review and editing (equal). **Beata Swiatkowska:** Project administration

(equal); resources (equal); writing – review and editing (equal). **David Zaridze:** Project administration (equal); resources (equal); writing – review and editing (equal). **Paul Brennan:** Conceptualization (equal); data curation (equal); investigation (equal); methodology (equal); supervision (equal); writing – review and editing (equal).

FUNDING INFORMATION

This work was funded by the International Agency for Research on Cancer (IARC).

CONFLICT OF INTEREST STATEMENT

No potential conflict of interest was reported by the authors.

DATA AVAILABILITY STATEMENT

The datasets analyzed during the current study are available from the corresponding author upon reasonable request.

ETHICS STATEMENT

This study was performed in line with the principles of the Declaration of Helsinki. Upon enrolment, informed written consent was obtained from all participants. This study was approved by the local ethical committees of each study center and also the ethical committee of the International Agency for Research on Cancer (IARC).

DISCLAIMER

Where authors are identified as personnel of the International Agency for Research on Cancer/World Health Organization, the authors alone are responsible for the views expressed in this article and they do not necessarily represent the decisions, policy, or views of the International Agency for Research on Cancer/World Health Organization.

ORCID

Mahdi Sheikh  <https://orcid.org/0000-0003-3972-7824>

Shama Virani  <https://orcid.org/0000-0002-1163-432X>

Hilary A. Robbins  <https://orcid.org/0000-0001-6041-6866>

Lenka Foretova  <https://orcid.org/0000-0003-0494-2620>

Jolanta Lissowska  <https://orcid.org/0000-0003-2695-5799>

David Zaridze  <https://orcid.org/0000-0002-2824-3704>

Paul Brennan  <https://orcid.org/0000-0002-0518-8714>

REFERENCES

1. Bray F, Ferlay J, Soerjomataram I, Siegel RL, Torre LA, Jemal A. Global cancer statistics 2018: GLOBOCAN estimates of incidence and mortality worldwide for 36 cancers in 185 countries. *CA Cancer J Clin.* 2018;68:394-424.

2. Duma N, Santana-Davila R, Molina JR. Non-small cell lung cancer: epidemiology, screening, diagnosis, and treatment. *Mayo Clin Proc.* 2019;94:1623-1640.
3. World Health Organization. World Cancer Report: Cancer Research for Cancer Prevention. 2020 Accessed April 21, 2020. <https://publications.iarc.fr/Non-Series-Publications/World-Cancer-Reports/World-Cancer-Report-Cancer-Research-For-Cancer-Prevention-2020>
4. Lung Cancer Survival Statistics [Internet]. Cancer Research UK. 2015 Accessed April 21, 2020. <https://www.cancerresearchuk.org/health-professional/cancer-statistics/statistics-by-cancer-type/lung-cancer/survival>
5. Francisci S, Minicozzi P, Pierannunzio D, et al. EUROCARE-5 working group: survival patterns in lung and pleural cancer in Europe 1999–2007: results from the EUROCARE-5 study. *Eur J Cancer.* 2015;51:2242-2253.
6. Lu T, Yang X, Huang Y, et al. Trends in the incidence, treatment, and survival of patients with lung cancer in the last four decades. *Cancer Manag Res.* 2019;11:943-953.
7. Debieuvre D, Locher C, Asselain B, et al. Evidence of slight improvement in five-year survival in non-small-cell lung cancer over the last 10 years: results of the French KBP-CPHG real-world studies. *Bull Cancer.* 2019;106:283-292.
8. Woodard GA, Jones KD, Jablons DM. Lung cancer staging and prognosis. *Cancer Treat Res.* 2016;170:47-75.
9. Green A, Hauge J, Iachina M, Jakobsen E. The mortality after surgery in primary lung cancer: results from the Danish Lung Cancer Registry. *Eur J Cardiothorac Surg.* 2016;49:589-594.
10. Blandin Knight S, Crosbie PA, Balata H, Chudziak J, Hussell T, Dive C. Progress and prospects of early detection in lung cancer. *Open Biol.* 2017;7:170070.
11. Chi A, Fang W, Sun Y, Wen S. Comparison of long-term survival of patients with early-stage non-small cell lung cancer after surgery vs stereotactic body radiotherapy. *JAMA Netw Open.* 2019;2:e1915724.
12. Liang Y, Wakelee HA. Adjuvant chemotherapy of completely resected early stage non-small cell lung cancer (NSCLC). *Transl Lung Cancer Res.* 2013;2:403-410.
13. Shin JY, Yoon JK, Marwaha G. Progress in the treatment and outcomes for early-stage non-small cell lung cancer. *Lung.* 2018;196:351-358.
14. Thorsteinsson H, Alexandersson A, Oskarsdottir GN, et al. Resection rate and outcome of pulmonary resections for non-small-cell lung cancer: a nationwide study from Iceland. *J Thorac Oncol.* 2012;7:1164-1169.
15. Aggarwal A, Lewison G, Idir S, et al. The state of lung cancer research: a global analysis. *J Thorac Oncol.* 2016;11:1040-1050.
16. Gemine R, Lewis K. Smoking cessation with lung cancer: not too little, never too late! *Eur Med J.* 2016;4:86-91. Accessed August 31, 2020. <https://www.emjreviews.com/respiratory/article/smoking-cessation-with-lung-cancer-not-too-little-never-too-late/>
17. Gliklich RE, Dreyer NA, Leavy MB. *Registries for Evaluating Patient Outcomes: A User's Guide [Internet]*. 3rd ed. Agency for Healthcare Research and Quality; 2014 <http://www.ncbi.nlm.nih.gov/books/NBK208616/>
18. Fritz A, Percy C, Jack A, et al. *International Classification of Diseases for Oncology [Internet]*. World Health Organization; 2000 Accessed April 26, 2020. <https://apps.who.int/iris/handle/10665/42344>
19. Morel H, Raynard B, d'Arlhac M, et al. Prediagnosis weight loss, a stronger factor than BMI, to predict survival in patients with lung cancer. *Lung Cancer.* 2018;126:55-63.
20. Lennon H, Sperrin M, Badrick E, Renehan AG. The obesity paradox in cancer: a review. *Curr Oncol Rep.* 2016;18:56.
21. Edge SB, Compton CC. The American joint committee on cancer: the 7th edition of the AJCC cancer staging manual and the future of TNM. *Ann Surg Oncol.* 2010;17:1471-1474.
22. WHO. International Statistical Classification of Diseases and Related Health Problems 10th Revision. 2018 Accessed from August 9, 2018. <https://icd.who.int/browse10/2016/en>
23. Bellera CA, MacGrogan G, Debled M, de Lara CT, Brouste V, Mathoulin-Pélissier S. Variables with time-varying effects and the Cox model: some statistical concepts illustrated with a prognostic factor study in breast cancer. *BMC Med Res Methodol.* 2010;10:20.
24. Galli F, Rohrmann S, Lorez M. Lung cancer survival in Switzerland by histology, TNM stage and age at diagnosis. *Schweizer Krebs-Bulletin.* 2019;39:69-73.
25. Khakwani A, Rich AL, Powell HA, et al. Lung cancer survival in England: trends in non-small-cell lung cancer survival over the duration of the National Lung Cancer Audit. *Br J Cancer.* 2013;109:2058-2065.
26. Babar L, Modi P, Anjum F. *Lung Cancer Screening [Internet]*. StatPearls Publishing; 2020 Accessed August 26, 2020. <http://www.ncbi.nlm.nih.gov/books/NBK537283/>
27. Reduced lung-cancer mortality with low-dose computed tomographic screening. *N Engl J Med.* 2011;365:395-409.
28. de Koning HJ, van der Aalst CM, de Jong PA, et al. Reduced lung-cancer mortality with volume CT screening in a randomized trial. *N Engl J Med.* 2020;382:503-513. Accessed November 22, 2022. <https://pubmed.ncbi.nlm.nih.gov/31995683/>
29. Visbal AL, Williams BA, Nichols FC, et al. Gender differences in non-small-cell lung cancer survival: an analysis of 4,618 patients diagnosed between 1997 and 2002. *Ann Thorac Surg.* 2004;78:209-215.
30. Eberle A, Jansen L, Castro F, et al. Lung cancer survival in Germany: a population-based analysis of 132,612 lung cancer patients. *Lung Cancer.* 2015;90:528-533.
31. Wisnivesky JP, Halm EA. Sex differences in lung cancer survival: do tumors behave differently in elderly women? *J Clin Oncol.* 2007;25:1705-1712.
32. Tammemagi CM, Neslund-Dudas C, Simoff M, Kvale P. Smoking and lung cancer survival: the role of comorbidity and treatment. *Chest.* 2004;125:27-37.
33. Bryant A, Cerfolio RJ. Differences in epidemiology, histology, and survival between cigarette smokers and never-smokers who develop non-small cell lung cancer. *Chest.* 2007;132:185-192.
34. Maeda R, Yoshida J, Ishii G, Hishida T, Nishimura M, Nagai K. The prognostic impact of cigarette smoking on patients with non-small cell lung cancer. *J Thorac Oncol.* 2011;6:735-742.
35. Kogure Y, Ando M, Saka H, et al. Histology and smoking status predict survival of patients with advanced non-small-cell lung cancer: results of West Japan Oncology Group (WJOG) Study 3906L. *J Thorac Oncol.* 2013;8:753-758.
36. Meguid RA, Hooker CM, Harris J, et al. Long-term survival outcomes by smoking status in surgical and nonsurgical patients with non-small cell lung cancer: comparing never smokers and current smokers. *Chest.* 2010;138:500-509.

37. Muallaoglu S, Karadeniz C, Mertsoylu H, et al. The clinicopathological and survival differences between never and ever smokers with non-small cell lung cancer. *J BUON*. 2014;19:453-458.
38. Toh C-K, Wong E-H, Lim W-T, et al. The impact of smoking status on the behavior and survival outcome of patients with advanced non-small cell lung cancer: a retrospective analysis. *Chest*. 2004;126:1750-1756.
39. Sheikh M, Mukeriya A, Shangina O, Brennan P, Zaridze D. Postdiagnosis smoking cessation and reduced risk for lung cancer progression and mortality: a prospective cohort study. *Ann Intern Med*. 2021;174:1232-1239.
40. Li W, Tse LA, JSK A, Yu KS, Wang F, Yu IT. Prognostic value of alcohol consumption and some other dietary habits for survival in a cohort of Chinese men with lung cancer. *Chin J Cancer*. 2017;36. Accessed August 31, 2020. <https://www.ncbi.nlm.nih.gov/pmc/articles/PMC5303233/>
41. Graf SA, Zeliadt SB, Rise PJ, Backhus LM, Zhou X-H, Williams EC. Unhealthy alcohol use is associated with postoperative complications in veterans undergoing lung resection. *J Thorac Dis*. 2018;10:1648-1656.
42. Paull DE, Updyke GM, Baumann MA, Chin HW, Little AG, Adebajo SA. Alcohol abuse predicts progression of disease and death in patients with lung cancer. *Ann Thorac Surg*. 2005;80:1033-1039.
43. Paull DE, Updyke GM, Davis CA, Adebajo SA. Complications and long-term survival for alcoholic patients with resectable lung cancer. *Am J Surg*. 2004;188:553-559.
44. Christensen NL, Løkke A, Dalton SO, Christensen J, Rasmussen TR. Smoking, alcohol, and nutritional status in relation to one-year mortality in Danish stage I lung cancer patients. *Lung Cancer*. 2018;124:40-44.
45. Meadows GG, Zhang H. Effects of alcohol on tumor growth, metastasis, immune response, and host survival. *Alcohol Res*. 2015;37:311-322.
46. Lam VK, Bentzen SM, Mohindra P, et al. Obesity is associated with long-term improved survival in definitively treated locally advanced non-small cell lung cancer (NSCLC). *Lung Cancer*. 2017;104:52-57.
47. Sepesi B, Gold KA, Correa AM, et al. The influence of body mass index on overall survival following surgical resection of non-small cell lung cancer. *J Thorac Oncol*. 2017;12:1280-1287.
48. Mytelka DS, Li L, Benoit K. Post-diagnosis weight loss as a prognostic factor in non-small cell lung cancer. *J Cachexia Sarcopenia Muscle*. 2018;9:86-92.
49. Li S, Che G, Liu L, Chen L. Does the “obesity paradox” really exist in lung cancer surgery? —maybe we should recognize what is the “obesity” first. *J Thorac Dis*. 2019;11:S291-S295.

SUPPORTING INFORMATION

Additional supporting information can be found online in the Supporting Information section at the end of this article.

How to cite this article: Sheikh M, Virani S, Robbins HA, et al. Survival and prognostic factors of early-stage non-small cell lung cancer in Central and Eastern Europe: A prospective cohort study. *Cancer Med*. 2023;00:1-12. doi:[10.1002/cam4.5791](https://doi.org/10.1002/cam4.5791)